



27

Locations
Nationwide

Bella Vista Accommodation Nationwide

Directory
www.bellavista.co.nz



- ✓ CENTRAL LOCATIONS
- ✓ FREE & UNLIMITED WIFI
- ✓ FREE ONSITE PARKING

Bella Vista Accommodation Nationwide operates 27 motels across New Zealand offering our guest's 4 star quality, comfort and convenience as they travel.

Bella Vista is proudly New Zealand owned and operated.

www.bellavista.co.nz

Contents

Features	3
Whangarei	4
Hamilton	5
Rotorua	6
Taupo	7
New Plymouth	8
Gisborne	9
Napier	10
Palmerston North	11
Wellington	12
Nelson	13
Blenheim	14
Westport	15
Kaikoura	16
Hanmer Springs	17
Greymouth	18
Hokitika	19
Christchurch	20
Franz Josef Glacier	21
Fox Glacier	22
Ashburton	23
Wanaka	24
Oamaru	25
Queenstown	26
Te Anau	27
Dunedin	28
Mosgiel	29
Invercargill	30
Booking details	31



Endorsed by QUALMARK



Kia ora and welcome to the Bella Vista Accommodation Network, popular throughout New Zealand for its purpose built single design properties that are easily recognisable inside and out.

The Bella Vista promise allows you to instantly know what to expect, enjoying comfort and convenience every stay.

We look forward to hosting you.

CONVENIENCE AND COMFORT AS YOU TRAVEL

Common to all our motel units:

- Tea, coffee and toast making facilities
- Kitchenette facilities – microwave, sink, utensils etc. (not in Compact Studios)
- All units features showers and selected units offer whirlpool bathtubs (available on request).
- Under bench refrigerator
- Local or multi-channel TV, in room phone
- All units non-smoking
- Access units
- Ground floor and first floor room options
- Heating and electric blankets
- Hair dryers
- Wardrobes
- Free off street car parking on site, adjacent to units
- All towels, linens, soaps
- Onsite tour booking desk
- Onsite live-in friendly local managers
- Free & Unlimited WiFi



FEATURES

Our motels are available in 3 convenient room types at competitive pricing levels to suit your personal budget and needs.

Rest assured – when you arrive at any one of our great locations, you will instantly know what to look for and expect in comfort and convenience at your chosen Bella Vista.

With consistent internationally recognised Qualmark standards and friendly local hosts, each facility represents a safe secure option, guaranteeing great value for money at any one of our nationwide locations.

Compact Queen



Typical size 16sqm

Ideal for short stays and great value, these small rooms include ensuite bathrooms, fridge and tea and coffee facilities. Microwaves are included in some locations. Maximum occupancy is 2 people.

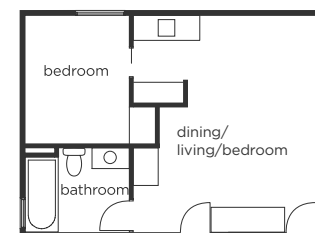
Superior Studios



Typical size 20sqm

Variations include Queen, King, Twin or Triple studios depending on location. Rooms feature king or queen bed and for triple rooms will include an additional single bed. Limited cooking facilities are featured in some locations. Rooms can sleep a 3rd person on request or if a triple room.

1 Bedroom Units



Typical size 37sqm

Available in a variety of room layouts most typically with open plan lounge/kitchen area, small dining table, a queen sized bed in the main room and 2 single beds in the separate bedroom. Offers full kitchen facilities including hotplates, microwave and/or mini oven. Maximum occupancy 4.

Many properties may offer on request and/or at additional charge:

- Cooked or continental breakfasts
- Guest laundry
- Cots and highchairs
- DVD players
- Baby sitting services
- Spa baths
- 2/3 bedroom units (selected properties only)
- Guest BBQ areas
- Air Conditioning/Heat Pumps (selected properties only)

APARTMENTS AND INTER-CONNECTING UNITS IN SOME LOCATIONS

WHANGAREI

322 Western Hills Drive, Whangarei
Phone: 09 438 6990
Email: whangarei@bellavista.co.nz

Distance from Motel:
Whangarei Domestic Airport 16mins
Town Centre 2mins
Auckland 159km Paihia 69km
Whangarei Town Basin 5mins



CLOSEST MOTEL TO THE CBD



LOCAL ATTRACTIONS

Whangarei and the wider region boasts an aquatic playground of beaches, pristine harbours and off-shore islands. Enjoy the world's best sub-tropical diving, stunning walkways, or wander among an impressive array of galleries and cafes where international yachts moor near the centre of town.

1. Wander Whangarei Town Basin Marina by foot
2. Take in the beautiful Whangarei Falls
3. Walk Mount Manaia Track for local views
4. Travel to Tutukaka and the famous Poor Knights Islands for diving and coastal scenery
5. Head west and visit ancient kauri trees of the Waipoua Forest
6. Travel north one hour and visit the Bay of Islands including the Waitangi Treaty Grounds

Room Inclusions & Key Information:

Tea/coffee & toast making facilities, continental breakfast, microwave kitchenette, SKY TV, Smart TVs, telephone, clock radio, fridge, iron and ironing board, hairdryer, desk space, free and unlimited WiFi. Heat Pumps/Air Conditioning in all rooms.

Check-in time: 2.00pm. **Check-out time:** 10.00am

Office hours: 7.30am - 8.00pm Mon-Fri
& 8.00am - 9.00pm Sat-Sun

On-site secure parking: Free of charge.

Available on request: Interconnecting rooms

Breakfast Service: Continental breakfast available on request.

ACCOMMODATION BY TYPE >	COMPACT QUEEN	QUEEN, KING, SPA & TRIPLE STUDIO	1 B/RM UNIT
Microwave	•	•	•
Tea, coffee, toaster & fridge	•	•	•
Sink, microwave & fridge		•	•
Sink, microwave, fridge & hotplate			•
Separate bedroom			•

Total Rooms: 18



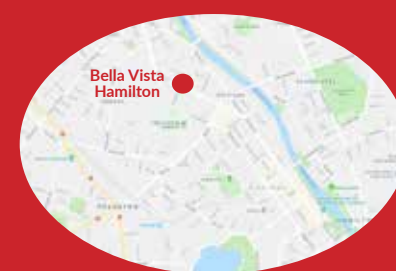
Conveniently located between the Bay of Islands and Auckland, this 18 room Bella Vista Motel is the closest motel and easy walking distance to Whangarei's CBD. Explore the modern city of Whangarei featuring the Town Basin Marina with its cluster of colonial style shops, cafes, restaurants & galleries. The area boasts over 100 great kiwi beaches, with diving, fishing & surfing a plenty.



HAMILTON

1 Richmond Street, Hamilton
Phone: 07 838 1234
Email: hamilton@bellavista.co.nz

Distance from Motel: Hamilton Airport 13km
Claudelands Event Centre 2km
Hobbiton Movie Set 65km
Shops & restaurants 5mins
Raglan 46km Waitomo Caves 1hr



WALK TO HAMILTON CITY CENTRE



SUPERIOR STUDIO

LOCAL ATTRACTIONS

Hamilton's riverside city is a great location to spend a few nights and shuttle to the surrounding attractions. Hobbiton and Waitomo Caves are two of New Zealand's most popular tourist destinations. With Auckland just 90 minutes to the north you're close to the airport. And don't forget to enjoy the Waikato River upon which the city has been built.

1. Waitomo Caves, an absolutely iconic tourist attraction less than an hour away.
2. Get a feel for the Waikato River on-board the scenic Waikato River Explorer.
3. Enjoy the delightful Hamilton Gardens, the most visited attraction in the Waikato.
4. Hobbiton from Lord of the Rings fame. An absolute must do.
5. Take a day trip to laid-back surf town Raglan.

Room Inclusions & Key Information:

Tea/coffee & toast making facilities, microwave kitchenette, SKY TV, telephone, free and unlimited WiFi, clock radio, fridge, iron and ironing board, hairdryer, desk space.

Check-in time: 2.00pm **Check-out time:** 10.00am

Office hours: 7.30am – 9.30pm

On-site secure parking: Free of charge, under surveillance camera

Available on request: Interconnecting rooms, cot, high chair.

Breakfast Service: Continental breakfast available on request.

ACCOMMODATION BY TYPE >	SUPERIOR STUDIO	1 B/RM UNIT	2 B/RM UNIT
Microwave	•	•	•
Tea, coffee, toaster & fridge	•	•	•
Sink, microwave & fridge	•	•	•
Sink, microwave, fridge & hotplate		•	•
Separate bedroom		•	•

Total Rooms: 18



Bella Vista Motel Hamilton offers modern, comfortable, clean studio's which include disability access units, 1 and 2 bedroom units. Very conveniently located in Hamilton, only 20 minutes drive from Hamilton Airport and 1.5 hours easy drive from Auckland Airport, a shuttle bus can be ordered to greet you or drop you off. From your motel unit, you can walk to Hamilton City Centre, Cafes, Restaurants, Bars, Supermarket, Waikato Stadium, Waikato River Walk and ProDrive Golf Driving Range. Central to Hobbiton, Cambridge Velodrome, Lake Karapiro and Waitomo Caves.





Distance from Motel:
Rotorua International & Domestic Airport 15mins
Rainbow Springs Wildlife Park 3.5km
Polynesian Spa 2.1km

A FEW MINUTES

WALK FROM THE CBD



POHUTU GEYSER



SUPERIOR STUDIO

LOCAL

ATTRACTIONS

Welcome to one of New Zealand's oldest tourist destinations. Travellers have been arriving for over 150 years to immerse themselves in the local attractions. Renown for its geothermal activity and Maori culture, there are countless attractions and activities on offer which would suit all ages and tastes. Spend as much time here as you can.

1. Rotorua Canopy Tours promise to give you a day to remember in the native forest.
2. Mountain bike the Rotorua Redwood Forest. There's a track for all abilities and ages.
3. Take the Skyline Gondola to the top of Mount Ngongotaha for views, food and lugging fun.
4. Soak in the Maori culture and heritage with a Tamaki Maori Village experience.
5. Take a wander round Kuirau thermal park with bubbling mudpools and steam set amongst wonderful gardens.



Room Inclusions & Key Information:

Tea/coffee & toast making facilities, SKY TV, telephone, free and unlimited WiFi, clock radio, fridge, iron and ironing board, hairdryer, desk space.

Check-in time: 2.00pm. **Check-out time:** 10.00am

Office hours: 7.30am – 8.00pm

On-site secure parking: Free of charge

Available on request: Interconnecting rooms, cot, high chair.

Breakfast Service: Continental breakfast on request

ACCOMMODATION BY TYPE >	COMPACT QUEEN	SUPERIOR STUDIO	1 B/RM UNIT
Microwave	•	•	•
Tea, coffee, toast & fridge	•	•	•
Sink, microwave & fridge		•	•
Sink, microwave, fridge & hotplate			•
Separate bedroom			•

Total Rooms: 18



This property is located on the main route in from Auckland or Hamilton and just a few minutes walk from Rotorua's bustling CBD. Bella Vista Motel Rotorua is situated adjacent to Kuirau Thermal Park which offers free access to local geothermal activity. Reception are more than happy to assist with booking local activities on your behalf.

Rotorua is centrally located in the Bay of Plenty making the city an ideal location to spend a few days exploring the region or as a business base. Hamilton, Taupo & Tauranga are very easy to access and about an hours drive in each direction.





Distance from Motel:
Lake Taupo Events Centre 2.1km
Shops & Restaurants 0.7km
Mt Ruapehu 152km

10 MINS WALK TO THE LAKEFRONT



LAKE TAUPO CRUISE



SUPERIOR STUDIO

LOCAL

ATTRACTIONS

Taupo has long been a kiwi favourite for lakeside holidays and a destination of choice for getting away from the daily grind. Great Lake Taupo is naturally the main feature of the town and getting beside or on the lake is a must do for every stay. The Central Plateau mountains are also close at hand for those looking for some walking or snow adventures.

1. Huka Falls are a must see. Visit the multiple look-outs and take-in this natural attraction
2. For the intrepid visitor, sky-diving is a popular activity with Taupo Tandem Skydive.
3. Cruise Lake Taupo. There are multiple ways to get on the water – all are enjoyable excursions.
4. When the gates are opened, Aratiatia Rapids become a force of nature. Timetable a visit during your stay.
5. If you are looking for a winter adventure, head down to the Mount Ruapehu ski fields.

Room Inclusions & Key Information:

Tea/coffee & toast making facilities, telephone, free and unlimited WiFi, clock radio, fridge, iron and ironing board, hairdryer, desk space, Heat Pumps/Air Conditioning in all rooms.

Check-in time: 2.00pm. **Check-out time:** 10.00am

Office hours: 8.00am - 8.00pm

On-site secure parking: Free of charge

Available on request: Interconnecting rooms, cot, high chair.

Breakfast Service: Continental breakfast available on request.

ACCOMMODATION BY TYPE >	COMPACT QUEEN	SUPERIOR STUDIO	1 B/RM UNIT
Microwave	•	•	•
Tea, coffee, toaster & fridge	•	•	•
Sink, microwave, fridge & hotplate		•	•
Separate bedroom			•

Total Rooms: 18



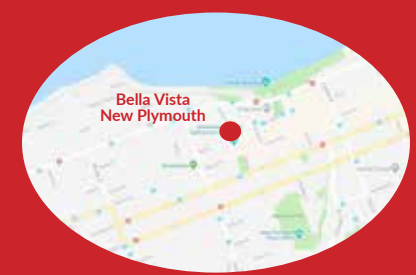
Nestled in a quiet location, just 10 minutes walk from the centre of Taupo and the edge of the lake, Bella Vista Motel Taupo is the ideal location to base yourself while exploring the local geothermal features or one of the many local adventure activities. Taupo is located just 45 minutes north of Tongariro National Park, 1 hour south of Rotorua and 2 hours inland from Napier so provides the ideal central base while visiting or working in the area. This 18 unit motel will offer the complete experience.



NEW PLYMOUTH

32 Queen Street, New Plymouth
Phone: 06 769 5932
Email: newplymouth@bellavista.co.nz

Distance from Motel:
New Plymouth Domestic Airport 30mins
Shops & Restaurants 2mins
Mt Taranaki 40mins
Coastal Walkway 2mins



IN THE HEART OF TARANAKI REGION



LOCAL ATTRACTIONS

Taranaki and the west coast of the North Island is very much a hidden gem for tourists. New Plymouth is often missed on travel itineraries and so the visitors who do come are treated to a real Kiwi experience. This pleasant city is set right on the coast surrounded by stunning coastlines and the impressive Mount Taranaki which stands silent inviting you to visit.

1. Visit the Len Lye Gallery. A short stroll from the motel and a national institution.
2. Use New Plymouth as a base to go hiking in and around Egmont National Park and Mount Taranaki.
3. Enjoy New Plymouth's coastal walkway including the iconic Te Rewa Rewa Bridge and the New Plymouth Wind Wand.
4. Take a trip to one of Taranaki's 17 gardens of national or regional significance.
5. Taranaki Farmers Market is a must do if you're in town on a Sunday morning.

Room Inclusions & Key Information:

Tea/coffee & toast making facilities, SKY TV, telephone, free and unlimited WiFi, clock radio, fridge, iron and ironing board, hairdryer, desk space.

Check-in time: 2.00pm. **Check-out time:** 10.00am

Office hours: 7.30am - 8.30pm

On-site secure parking: Free of charge

Available on request: Interconnecting rooms, cot, high chair.

Breakfast Service: Continental breakfast available on request.

ACCOMMODATION BY TYPE >	COMPACT QUEEN	SUPERIOR STUDIO	1 B/RM UNIT
Microwave	•	•	•
Tea, coffee, toaster & fridge	•	•	•
Sink, microwave & fridge		•	•
Sink, microwave, fridge & hotplate			•
Separate bedroom			•

Total Rooms: 18



This immaculately presented 18-room motel featuring Superior, One bedroom & Studio units with microwave kitchenettes is conveniently located in the Central Business District of New Plymouth with ample complimentary car parking on-site. New Plymouth, located in the heart of the Taranaki region, is an essential base for those on holiday or doing business on the west coast of the North island. From here you can explore the wild coast south east to Whanganui, Palmerston North or Wellington, or head north to Waitomo, Rotorua and Auckland.



GISBORNE

511 - 513 Gladstone Road, Gisborne
Phone: 06 868 7931
Email: gisborne@bellavista.co.nz



Distance from Motel:
Gisborne Domestic Airport 5mins
Shops & Restaurants 2mins
Te Urewera National Park 186km

CLOSE TO GISBORNE CITY CENTRE



SUPERIOR STUDIO

LOCAL ATTRACTIONS

Relax into the East Cape by taking a trip to the main city on your way around this scenic peninsular. The whole region is full of untold natural beauty complemented by both natural attractions and other major draw-cards such as the top quality wineries that dot the landscape.

1. Get up close to stingray and other significant sea life at Dive Tatapouri.
2. Morere Hot Springs; a tranquil haven only thirty minutes from town.
3. Gisborne is surrounded by world-class wineries. They're worth a visit.
4. Take a trip to Tolaga Bay and stroll down New Zealand's longest pier.
5. Check out the Rere Rockslide, a popular local attraction.

Room Inclusions & Key Information:

Tea/coffee & toast making facilities, SKY TV, telephone, free and unlimited WiFi, clock radio, fridge, iron and ironing board, hairdryer, work station.

Check-in time: 2.00pm. **Check-out time:** 10.00am

Office hours: 7.30am - 9pm

On-site secure parking: Free of charge

Available on request: Interconnecting rooms, cot, high chair.

Breakfast Service: Continental breakfast available on request.

ACCOMMODATION BY TYPE >	COMPACT QUEEN	SUPERIOR STUDIO	1 B/RM UNIT
Microwave	•	•	•
Tea, coffee, toaster & fridge	•	•	•
Sink, microwave & fridge		•	•
Sink, microwave, fridge & hotplate			•
Separate bedroom			•

Total Rooms: 18



This immaculately presented 18-room motel featuring executive / family & studio units with microwave kitchenettes is conveniently located close to Gisborne CBD and Airport with ample complimentary car parking on site.

Gisborne is an essential stop off or base location when visiting the far east of the North Island. From here you are within striking distance of the East Cape and onto the Bay of Plenty. Close by is the Urewera National Park and Lake Waikaremoana.



NAPIER

Cnr Hastings & Vautier Streets, Napier
Phone: 06 835 9599
Email: napier@bellavista.co.nz



Distance from Motel:
National Aquarium of New Zealand 850m
Napier Domestic Airport 9km
Town Centre 450m

NEAR NAPIER'S FAMOUS ART DECO CENTRE



ART DECO NAPIER



SUPERIOR STUDIO

LOCAL ATTRACTIONS

Welcome to Hawkes Bay and the popular sea-side destination of Napier. This region boasts a temperate climate and you'll have no problem filling your time with the many attractions throughout the region. Ticking off a few wineries will be top of your list, take to the cycle trails and just relax and enjoy.

1. Climb to the top of Bluff Hill for outstanding views of Napier and the Hawkes Bay.
2. Take a guided Art Deco walk around town focusing on the rebirth of the city after the destructive earthquake of 1931.
3. Visit Cape Kidnappers by tractor and view the bird-life.
4. Spend time at MTG Hawke's Bay – an enjoyable museum, gallery and theatre.
5. Enjoy a local wine tour or hire bicycles and cruise amongst the vineyards.

Room Inclusions & Key Information:

Tea/coffee & toast making facilities, SKY TV, telephone, free and unlimited WiFi, clock radio, fridge, iron and ironing board, hairdryer, desk space Heat Pumps/Air Conditioning in all rooms.

Check-in time: 2.00pm. **Check-out time:** 10.00am

Office hours: Mon to Fri 7:30am to 8:30pm, weekend and public holidays 8am to 8pm

On-site secure parking: Free of charge

Available on request: Interconnecting rooms, cot, high chair & daily newspaper.

Breakfast Service: Continental breakfast available on request.

ACCOMMODATION BY TYPE >	COMPACT QUEEN	SUPERIOR STUDIO	1 B/RM UNIT
Tea, coffee, toaster & fridge	•	•	•
Sink & microwave		•	•
Small oven, hotplates, and separate bedroom			•

Total Rooms: 18



Centrally located near the heart of Napier's famous Art Deco centre on a quiet street, this property offers the highest quality and comfort for leisure travellers. Only 100 metres from the beach front and just a 3 minute walk to a wide selection of bars, cafes & restaurants. Napier is an ideal central location in the Hawkes Bay with easy access to Hastings, Masterton and south onto Wellington, west to Taupo and north to Gisborne. For a holiday trip, Bella Vista Motel Napier will fit your needs perfectly.



PALMERSTON NORTH

172-174 Fitzherbert Ave, Palmerston North
Phone: 06 354 2216
Email: palmerstonnorth@bellavista.co.nz

Distance from Motel:
Palmerston North Airport 5.8km
Wellington 142km
Taupo 244km



PALMERSTON NORTH SQUARE



SUPERIOR STUDIO

**3 BLOCKS EASY
WALK TO
THE CBD**

**LOCAL
ATTRACTIONS**

Palmerston North is a great place to pause and take a break for any North Island self-drive itinerary. You'll feel a warm welcome from heartland New Zealand and you are within striking distance of plenty of attractions and activities.

1. Drive over the saddle road and view the impressive Te Apiti Windfarm.
2. Take time to wander near the Palmerston North Clock Tower and enjoy the towns coffee shops.
3. Tour the small towns of Manawatu including Fielding, Taihape and Bulls.
4. If you are in to white water rafting, a visit to River Valley is an absolute must-do.
5. Follow the Palmerston North Arts & Sculpture Trail or Heritage Trail

Room Inclusions & Key Information:

Tea/coffee & toast making facilities, SKY TV - 50+ Channels, telephone, free and unlimited WiFi, clock radio, fridge, iron and ironing board, hairdryer, desk space.

Check-in time: 1.00pm. **Check-out time:** 10.00am

Office hours: 7.30am – 9:30pm

On-site secure parking: Free of charge

Available on request: Interconnecting rooms, cot, high chair & daily newspaper

Breakfast Service: Cooked and continental breakfast available on request.

ACCOMMODATION BY TYPE >	COMPACT QUEEN	SUPERIOR STUDIO	1 B/RM UNIT
Microwave	•	•	•
Tea, coffee, toaster & fridge	•	•	•
Sink, microwave & fridge		•	•
Sink, microwave, fridge & hotplate			•
Separate bedroom			•

Total Rooms: 18
Onsite meeting room for up to 30 delegates.



Palmerston North



Easily found on Fitzherbert Avenue, only 3 blocks from the Central Business District, there are plenty of bars and restaurants within easy walking distance from the motel.

Palmerston North is the halfway point Taupo and Wellington, a great stop off point. This bustling university town has plenty of life and its central location makes it an ideal place to stay.



WELLINGTON

302 – 304 Evans Bay Parade, Wellington
Phone: 04 939 4430
Email: wellington@bellavista.co.nz

Distance from Motel:
Wellington International & Domestic Airport 7mins
Te Papa Museum 9mins
Interislander Ferry Terminal 13mins
Wellington City Centre 9mins



GREAT LOCATION ON EVANS BAY



LOCAL ATTRACTIONS

Wellington is New Zealand's very cool little capital. Few cities can boast the lifestyle Wellington offers and a couple of days here will impress you to stay a few more nights! You can expect all the metropolitan attractions any city should deliver coupled with some stunning harbour-side views and a few other secret spots in between.

1. Wellington Cable Car is a must do and great views across the city.
2. Take your time at Te Papa, the nation's museum.
3. Get in touch with the Hobbit in you and visit the impressive Weta Cave.
4. Buy an ice cream and enjoy the seaside-city vibe in Oriental Bay.
5. Immerse yourself in the Wellington Botanic Gardens

Room Inclusions & Key Information:

Tea/coffee & toast making facilities, SKY TV - 50+ Channels, telephone, free and unlimited WiFi, microwave, fridge, iron and ironing board, hairdryer, desk space.

Check-in time: 2.00pm. **Check-out time:** 10.00am

Office hours: 7.30am – 9pm weekdays & 8am – 8pm Weekends

On-site secure parking: Free of charge

Available on request: Interconnecting rooms, port-a-cot, high chair, hot plates, free Airport shuttle (during office hours).

Breakfast Service: Continental breakfast available on request.

ACCOMMODATION BY TYPE >	COMPACT QUEEN	SUPERIOR STUDIO	1 B/RM UNIT
Microwave	•	•	•
Tea, coffee, toaster & fridge	•	•	•
Sink, microwave & fridge		•	•
Sink, microwave, fridge & hotplate			•
Separate bedroom			•

Total Rooms: 16



Wellington

Bella Vista Wellington offers a great location on Evans Bay Parade, approx. 7 minutes from Airport and Central City or 13 minutes to ferry terminals. Wellington's vibrant waterfront is full of restaurants, cafes, shops, galleries and most famously Te Papa, the museum of New Zealand. The city also hosts various performing arts, festivals, international and national sporting events and conferences.



Distance from Motel:
Nelson Domestic Airport 2.2km
Abel Tasman National Park 1hr
World of Wearable Art Museum 1.5km
Town Centre 10mins Tahunanui Beach 1.5km



ABEL TASMAN KAYAK

CLOSE TO TAHUNANUI BEACH



SUPERIOR STUDIO

LOCAL ATTRACTIONS

Nelson is a terrific town to include in your holiday itinerary. A picturesque location which enjoys plenty of sunshine, it boasts a vibrant culture and offers a wealth of attractions including the fabled Abel Tasman National Park.

1. Bella Vista Nelson is located a short walk from Tahunanui Beach, the city's most popular sea-side destination.
2. Take a walk to the 'Centre of New Zealand'. A short uphill climb through forest will bring you out to a hilltop with a view of the city.
3. Discover the Abel Tasman National Park; hiking, kayaking, boat trips and wildlife make this a very special day out.
4. Take the bicycle trail rides toward Rabbit Island and onwards.
5. Head to Moturoa / Rabbit Island a popular spot for relaxation, walking and picnicking.



Ideally located on Tahunanui Drive, close to Nelsons' famous Tahunanui Beach and its surrounding shops, cafes and restaurants and just a 10 minute drive from the central city. Nelson offers a huge range of markets, craftspeople and vineyards within close proximity to the city. Within 90 minutes of Nelson lie three geographically diverse national parks: Abel Tasman, Nelson Lakes and Kahurangi. Relax and enjoy a stroll on the beach.

Room Inclusions & Key Information:

Tea/coffee & toast making facilities, SKY TV, telephone, free and unlimited WiFi, clock radio, fridge, iron and ironing board, hairdryer, desk space. Microwave in each room.

Check-in time: 2.00pm **Check-out time:** 10.00am

Office hours: 7.30am – 9pm

On-site secure parking: Free of charge

Available on request: Cot.

Breakfast Service: Continental breakfast available on request.

ACCOMMODATION BY TYPE >	COMPACT QUEEN	SUPERIOR STUDIO	1 B/RM UNIT
Microwave	•	•	•
Tea, coffee, toaster & fridge	•	•	•
Sink, microwave & fridge		•	•
Sink, microwave, fridge & hotplate			•
Separate bedroom			•

Total Rooms: 18



BLenheim

81 Charles Street, Blenheim
Phone: 03 579 3117
Email: blenheim@bellavista.co.nz

Distance from Motel:
Marlborough Convention Centre 400m
Picton / Interisland Ferry 28km
Omaka Aviation Heritage Museum 4.3km
Airport 7km Town Centre 300m
Over 70 wineries within area



**LESS THAN
5 MINS WALK
TO CBD**

LOCAL

ATTRACTIONS

A popular town for both New Zealanders and tourists alike, sunny Blenheim is nestled in the heart of the Marlborough region, internationally recognised as a vintage wine growing region. There are plenty of things here to do beyond bountiful wineries, including exploring the picturesque Marlborough Sounds.

1. You are staying in the heart of Marlborough so take in a wonderful wine tours.
2. Omaka Aviation Heritage Centre, touched by the hand of Peter Jackson's Weta Workshop, is worth a visit.
3. The historic Riverlands Cob Cottage is a fascinating insight into the lives of some of New Zealand's earliest pioneers.
4. The Marlborough Sounds are a short drive away. Boat trips and walks are very popular.
5. The Marlborough Flyer is a heritage steam train from a majestic bygone era that travels from Picton to Blenheim and return.



BLenheim VINEYARD



SUPERIOR STUDIO

Room Inclusions & Key Information:

Tea/coffee & toast making facilities, SKY TV - 50 Channels, telephone, free and unlimited WiFi, desk light, clock radio, fridge, iron and ironing board, hairdryer, desk space.

Check-in time: 1.00pm. **Check-out time:** 10.00am

Office hours: 7.30am - 9pm

On-site secure parking: Free of charge

Available on request: Interconnecting rooms, cot, high chair.

Breakfast Service: Continental breakfast available on request.

ACCOMMODATION BY TYPE >	COMPACT QUEEN	SUPERIOR STUDIO	1 B/RM UNIT
Microwave	•	•	•
Tea, coffee, toaster & fridge	•	•	•
Sink, microwave & fridge		•	•
Sink, microwave, fridge & hotplate		•	•
Separate bedroom			•

Total Rooms: 18



Blenheim

Stay in central Blenheim, less than 5 minutes walk from the restaurants, bars, supermarket and shops, surrounded by the world famous Marlborough wine growing area.

Blenheim is a 25 minute drive from the Picton ferry making us an ideal arrival or departure point from the South Island, and a stepping stone to Kaikoura, Abel Tasman National Park or the West Coast.



WESTPORT

314 Palmerston Street, Westport
Phone: 03 789 7800
Email: westport@bellavista.co.nz



Distance from Motel:
Shops & restaurants 2mins
Punakaiki Rocks 56km
Nelson 220km
Greymouth 103km

WALKING DISTANCE TO TOWN CENTRE



SUPERIOR STUDIO

Room Inclusions & Key Information:

Tea/coffee & toast making facilities, SKY TV, telephone, free and unlimited WiFi, clock radio, fridge, iron and ironing board, hairdryer, desk space.

Check-in time: 2.00pm. **Check-out time:** 10.00am

Office hours: 7.30am – 9.30pm weekdays
& 8am – 9.30pm weekends

On-site secure parking: Free of charge

Available on request: Cot, high chair.

Breakfast Service: Continental breakfast available on request.

ACCOMMODATION BY TYPE >	COMPACT QUEEN	SUPERIOR STUDIO	1 B/RM UNIT
Microwave	•	•	•
Tea, coffee, toaster & fridge	•	•	•
Sink, microwave & fridge		•	•
Sink, microwave, fridge & hotplate		•	•
Separate bedroom			•

Total Rooms: 18

LOCAL ATTRACTIONS

Westport is a vibrant small town which is a perfect staging point for further exploration of the region and also any onward journeys on the West Coast. Be sure to not overlook some of the very special local attractions Westport offers to visitors including beach time, terrific walks and pioneer heritage insights.

1. Walk the Cape Foulwind walkway including panoramic views, a lighthouse and the seal colony from which it takes its name.
2. Use Bella Vista Westport as a starting point for riding the famous Old Ghost Road bike trail.
3. Follow the Coal Mining Heritage trail to historic sites at Denniston and Stockton.
4. Head south and visit the Punakaiki Pancake Rocks and blowholes.
5. Westport is the perfect base for anyone walking the Heaphy Track and trips to Karamea.



Easily found upon arrival to Westport, this motel offers 18 units, within walking distance to Westport town centre, supermarkets and restaurants. Westport is a relaxed town located on the northern west coast of the South Island. It provides an excellent base to launch from towards the Heaphy Track and Karamea in the North or Punakaiki Rocks to the South and onwards to Greymouth, Hokitika and the Glaciers.



KAIKOURA

SH 1 45-47 Churchhill Street, Kaikoura
Phone: 03 319 7959
Email: kaikoura@bellavista.co.nz

Distance from Motel:
Town Centre 5mins
Kaikoura Airfield 5km
Whale Watch Kaikoura 10mins
Dolphin Encounter 10mins
Seal Colony 10mins drive



5 MINS WALK TO THE TOWN CENTRE



WHALE WATCH KAIKOURA



SUPERIOR STUDIO

LOCAL ATTRACTIONS

Kaikoura is unique among New Zealand's towns serving as a gateway to some of the world's finest nature experiences. The local geography of the Pacific Ocean means an abundance of marine life including whales and dolphins visit daily just a short distance offshore. The town has a picturesque setting by the sea surrounded by the Kaikoura mountains both of which are visible from the motel.

1. Kaikoura is famous for its Whale Watching and these incredible giants can be seen all year round.
2. Dolphin Encounter allows you to swim with and watch Dusky Dolphins.
3. Enjoy a sea-kayaking tour in one of New Zealand's most spectacular regions – where the mountains meet the sea.
4. Take a hike! Climbing Mount Fyffe takes a whole day but offers the most stunning views.
5. Hanmer Springs. If you don't have time to stay at Hanmer Springs, it is definitely worth a day trip from Kaikoura.



Positioned in an easy to find location on the main highway through Kaikoura and 5 minute walk to the town centre, this is an ideal location from which to explore the areas unique whale watching, dolphin swimming and natural wildlife experiences. Located roughly half way between Christchurch & Picton on the South Island's East Coast, Kaikoura is the ideal stop off point for a couple of nights. If you are exploring the area on holiday or doing business then Hanmer Springs & Blenheim are within an easy drive distance.



Room Inclusions & Key Information:

Tea/coffee & toast making facilities, FREEVIEW and SKY TV, telephone, free and unlimited WiFi, clock radio, fridge, iron and ironing board, hairdryer, desk space.

Check-in time: 2.00pm. **Check-out time:** 10.00am

Office hours: 8.00am – 8.00pm

On-site secure parking: Free of charge

Available on request: Interconnecting rooms, cot, high chair, free newspaper.

Breakfast Service: Continental breakfast available on request.

ACCOMMODATION BY TYPE >	COMPACT QUEEN	SUPERIOR STUDIO	1 B/RM UNIT
Microwave	•	•	•
Tea, coffee, toaster & fridge	•	•	•
Sink, microwave & fridge		•	•
Sink, microwave, fridge & hotplate			•
Separate bedroom			•

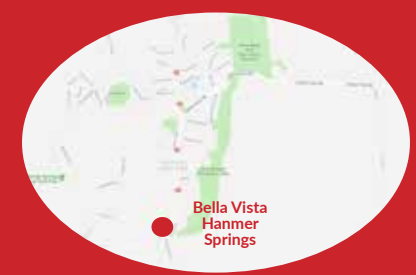
Total Rooms: 18



HANMER SPRINGS

SH 7A, Tarndale Place, Hanmer Springs
Phone: 03 315 7540
Email: hanmersprings@bellavista.co.nz

Distance from Motel:
Hanmer Springs Hot Pools & Spa 1km
Town Centre 1km
Christchurch 133km



EASY WALK TO THE POOLS



LOCAL

ATTRACTIONS

This delightful alpine village is a must visit location throughout the year if you want to get a true feel for the relaxed living New Zealanders enjoy. Surrounded by forested mountains, there is plenty on offer for all visitors young and old. No visit is complete without taking in the famous hot pools for which the town is synonymous and takes its names.

1. Hanmer Springs Thermal Pools and Spa is the must do attraction in Hanmer Springs.
2. For those looking for adventure there are plenty of thrills to be had in Hanmer Springs. Jet boating, rafting get you onto the Waiau River.
3. The Conical Hill short walk provides a wonderful 360-degree view across Hanmer Springs and the surrounding mountains.
4. Hanmer Springs Trails are highly rated cycling and walking tracks for all ages with stunning views.
5. Kaikoura is a short 90 minute scenic drive away. Take a day trip to the coast and take the chance to enjoy many of the incredible natural wonders Kaikoura has to offer.

Room Inclusions & Key Information:

Tea/coffee & toast making facilities, SKY TV, telephone, free and unlimited WiFi, clock radio, fridge, iron and ironing board, hairdryer, desk space.

Check-in time: 2.00pm **Check-out time:** 10.00am

Office hours: 8.00am – 9.00pm

On-site secure parking: Free of charge

Available on request: Interconnecting rooms, cot, high chair

Breakfast Service: Continental breakfast available on request.

ACCOMMODATION BY TYPE >	COMPACT QUEEN	SUPERIOR STUDIO	1 B/RM UNIT
Microwave	•	•	•
Tea, coffee, toaster & fridge	•	•	•
Sink, microwave & fridge		•	•
Sink, microwave, fridge & hotplate			•
Separate bedroom			•

Total Rooms: 18
Tennis Court onsite.



Business or pleasure – whatever the reason for visiting the alpine village of Hanmer Springs, the Bella Vista Motel can fulfill your accommodation requirements. A great location with 18 superior motel units only a minute's easy walk to Hanmer Springs Thermal Pools and Spa. Hanmer Springs has a little bit of everything for everyone. Located under 1.5 hours from Christchurch and with onward access to the West Coast, Nelson or Kaikoura, Hanmer Springs provides a great stop off for the holiday maker or an overnight break for corporate travellers.



GREYMOUTH

33 - 35 High Street, Greymouth
Phone: 03 768 7199
Email: greymouth@bellavista.co.nz

Distance from Motel:
Town Centre 1km TranzAlpine Station 1.4km
Monteiths Brewery 600m
Shantytown 11.3km Punakaiki 45km
Franz Josef Glacier 171km



CLOSE TO

CBD & LOCAL ATTRACTIONS



SHANTYTOWN GOLD PANNING



SUPERIOR STUDIO

Room Inclusions & Key Information:

Tea/coffee & toast making facilities, SKY TV, telephone, free and unlimited WiFi, clock radio, fridge, iron and ironing board, hairdryer, desk space.

Check-in time: 2.00pm **Check-out time:** 10.00am

Office hours: 7.30am to 8.30pm & 8.00am to 8.00pm weekends

On-site secure parking: Free of charge

Available on request: Interconnecting rooms, cot, high chair

Breakfast Service: Continental breakfast available on request.

ACCOMMODATION BY TYPE >	COMPACT QUEEN	SUPERIOR STUDIO	1 B/RM UNIT
Microwave	•	•	•
Tea, coffee, toaster & fridge	•	•	•
Sink, microwave & fridge		•	•
Sink, microwave, fridge & hotplate			•
Separate bedroom			•

Total Rooms: 18



Situated just a short drive from the town centre, Bella Vista Greymouth is an easy to find motel offering a great stopping point, particular for those who arrive by the famous Tranzapline train.

This 18 room self contained property is located close to restaurants, cafes, bars, supermarket and aquatic centre.

Basing yourself in Greymouth for a few days will allow you to soak up some of the famous West Coast hospitality. While here, experience Monteiths, Shantytown or the West Coast Wilderness cycle trail.



LOCAL

ATTRACTIONS

For many, Greymouth is a starting and finishing point to New Zealand's famous West Coast adventures. Whether you are heading north to Punakaiki and Westport, south to Hokitika and the incomparable Glaciers or east to Arthurs Pass and Canterbury on the must-do TranzAlpine train, Greymouth will become a central feature to your journey.

1. Take a visit to the celebrated Monteiths Brewery, an icon of the West Coast. Every tour ends with a tasting session.
2. Take an 11km journey north of Greymouth and you'll arrive at the historical Brunner Mine site.
3. The TranzAlpine is arguably New Zealand's most scenic rail journeys travelling between Greymouth and Christchurch.
4. Punakaiki Pancake Rocks are a great natural attraction situated one hour north from Greymouth
5. Step back in time and gain a sense of the past at Shantytown. Gold panning, steam train rides a timber mill and a recreated 19th Century township complete this attraction.



HOKITIKA

52 Fitzherbert Street, Hokitika
Phone: 03 755 8047
Email: hokitika@bellavista.co.nz



Distance from Motel:
Hokitika Airport 5mins
Franz Josef Glacier 134km
Greymouth 40km
Shops & restaurants 4mins

4 MIN WALK TO THE TOWN CENTRE



HOKITIKA GORGE



SUPERIOR STUDIO

LOCAL ATTRACTIONS

This town really is a must-stay spot with a reputation of being a 'Cool Little Town'. Picturesque natural beauty, untamed coastal wilderness and a big bunch of friendly folk combine to make it a firm favourite for many travellers.

1. Head to the driftwood strewn Hokitika beach and get creative as others have done before you.
2. Take some time to explore the range of local art and craft galleries which exhibit everything from hand blown glass and gold nugget jewellery to wood craft and New Zealand jade (pounamu).
3. Head inland and take in the enjoyable Hokitika Gorge. This popular short walk will take you through the lush native bush and along a swing-bridge which crosses the vivid turquoise water of the Hokitika River.
4. Sunset Point at sunset is a must do for all visitors. Not only a great place to take a walk but the perfect setting to enjoy watching the sun disappear over the horizon of the Tasman Sea at the end of the day.
5. Visit the tranquil Lake Mahinapua where the water is surprisingly warm or Lake Kaniere set within a scenic reserve surrounded by mountains.

Room Inclusions & Key Information:

Tea/coffee & toast making facilities, SKY TV - 50+ Channels including Sport, telephone, free and unlimited WiFi, clock radio, fridge, iron and ironing board, hairdryer, desk space, Interconnecting rooms on request.

Check-in time: 2.00pm. **Check-out time:** 10.00am

Office hours: 7.30am – 9.00pm

On-site secure parking: Free of charge

Available on request: Portacot and high chair

Breakfast Service: Continental breakfast available on request.

Value Adds: Free airport pick-up - on request.

ACCOMMODATION BY TYPE >	COMPACT QUEEN	SUPERIOR STUDIO	1 B/RM UNIT
Microwave	•	•	•
Tea, coffee, toaster & fridge	•	•	•
Sink, microwave & fridge		•	•
Sink, microwave, fridge & hotplate			•
Separate bedroom			•

Total Rooms: 16



Bella Vista Hokitika is ideally located, a 4 minute flat walk to the town centre where you can browse through the many art and craft studios and shops, stroll along the wild West Coast beach and enjoy the amazing sunsets.

Hokitika is an ideal place to use as a base to explore the West Coast. Studios and one bedroom units are available, all with free Wifi access.



Hokitika



CHRISTCHURCH

193 Bealey Avenue, Christchurch
Phone: 03 377 3363
Email: christchurch@bellavista.co.nz



Distance from Motel:
Christchurch International & Domestic Airport 10km
Hagley Park & Botanical Gardens 1.5km
Shops & restaurants 8mins Cathedral Square 1.3km
Christchurch Casino 1.2km

SHORT WALK INTO TOWN CENTRE



TRAM ON REGENT STREET



QUEEN STUDIO

LOCAL ATTRACTIONS

As the gateway to South Island, Christchurch remains a must-do on any traveller's New Zealand bucket list. The city has bounced back following the earthquakes and has seen the rise of an innovative range of attractions. Christchurch retains its reputation as the Garden City.

1. An oasis in the centre of Christchurch, the Botanic Gardens are the perfect place to come and relax for a while.
2. Jump aboard Christchurch Gondola and make your way up Mt Cavendish in the Port Hills.
3. The Antarctic Centre is the closest most of us will ever get to Antarctica. This interactive attraction whisks you away as if you were in Antarctica.
4. Unique in architecture and design, visit the Cardboard Cathedral a structure that epitomizes the stoic attitude of the people of this city.
5. Christchurch Tramway is the ideal way to get out and see the city.

Room Inclusions & Key Information:

Tea/coffee & toast making facilities, SKY TV & Freeview, telephone, free and unlimited WiFi, clock radio, fridge, iron and ironing board, hairdryer.

Check-in time: 2.00pm. **Check-out time:** 10.00am

Office hours: 8.00am – 9.00pm

On-site secure parking: Free of charge

Available on request: Cot, high chair.

Breakfast Service: Continental breakfast on request.

ACCOMMODATION BY TYPE >	COMPACT QUEEN	SUPERIOR STUDIO	1 B/RM UNIT	2 B/RM APT	3 B/RM APT
Microwave	•	•	•	•	•
Tea, coffee, toaster & fridge	•	•	•	•	•
Sink, microwave, fridge & hotplate		•	•	•	•
Separate bedroom			•	•	•
Full kitchen incl. dishwasher				•	•
Spa bath				•	

Total Rooms: 23

Room total includes 7 multi-level, townhouse apartments.



Bella Vista Motel Christchurch is conveniently located on Bealey Avenue; 15-20mins walk into the town centre via the cafes and boutique shopping of cosmopolitan Victoria Street and within walking distance to the Town Hall and Convention Centre, Christchurch Casino, Southern Cross Hospital, tourist attractions and information office, restaurants, bars and entertainment. The property very easy to find when self driving from airport or arriving in from north of the city.



FRANZ JOSEF GLACIER

34 Cron Street, Franz Josef Glacier
Phone: 03 752 0008
Email: franzjosef@bellavista.co.nz

IN THE HEART OF FRANZ JOSEF GLACIER VILLAGE



GLACIER HIKES



KING STUDIO

Room Inclusions & Key Information:

A range of complimentary hot drink options with fresh milk daily. LCD TV, DVD player, telephone, free and unlimited WiFi, clock radio, fridge, iron and ironing board, desk space, fresh towels and complimentary soaps, hairdryer.

Check-in time: 2.00pm. **Check-out time:** 10.00am

Office hours: 8:00am – 8.30pm

On-site secure parking: Free of charge

Available on request: Interconnecting rooms, cot, high chair.

Breakfast Service: Continental breakfast available on request.

ACCOMMODATION BY TYPE >	COMPACT QUEEN	SUPERIOR STUDIO	1 B/RM UNIT
Tea, coffee, toaster & fridge	•	•	•
Microwave Kitchenette including single hot plate and electric fry pan		•	•
Fully equipped Kitchen with mini oven. Queen bed in living area, separate bedroom with two single beds. Shower over Spa bath			•

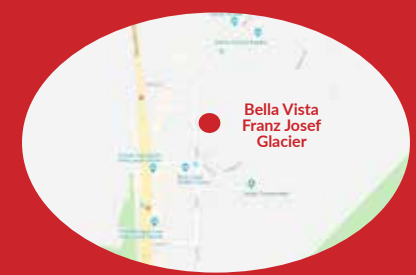
Total Rooms: 18



This 18-unit motel complex is nestled in the heart of the Franz Josef Glacier Village in the Westland National Park and only a short walk to the Glacier Hot Pools and The Kiwi incubation unit at the West Coast Wildlife Centre. A good range of restaurants, shops and activities are within 3 minutes walk. Our motel offers a range of studio room accommodation including Spa bath, Queen, Twin, Family units and our popular upstairs Mountain View studio which boasts great views towards the glacier valley.



Distance from Motel:
Glacier Hot Pools 550m
Franz Josef Glacier Carpark 5km
Fox Glacier 24km Hokitika 133km
Greymouth 174km Lake Wanaka 285km



LOCAL ATTRACTIONS

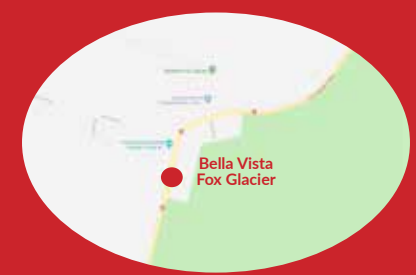
Franz Josef Glacier village is the epicentre of any visit to 'Glacier Country'. Set in the Westland National Park, not only are you staying a short distance from Franz Josef Glacier itself, but you're within reach of some other wondrous sights and activities. It's a very special place to spend a few days.

1. Heli-hike Franz Josef Glacier, there is simply no better way of experiencing this natural attraction.
2. Head to Waiho Hot Tubs, relax and enjoy your visit whatever the weather or time of day.
3. The West Coast Wildlife Centre featuring Kiwi is adjacent to the motel.
4. Visit Okarito Lagoon for wildlife and a West Coast experiences.
5. Enjoy eats and treats at the Snake Bite Brewery.



FOX GLACIER

SH6, Haast Highway, Main Road, Fox Glacier
Phone: 03 751 0129
Email: foxglacier@bellavista.co.nz



Distance from Motel:
Lake Matheson 5.2km
Fox Glacier 5km
Queenstown 328km

IN A QUIET CENTRAL LOCATION



GLACIER HELI-HIKE



SUPERIOR STUDIO

LOCAL ATTRACTIONS

Fox Glacier is an intimate and pleasant West Coast town situated a short distance from the glacier its name comes from. A tourist hub for onward glacier and West Coast adventures, Fox Glacier is also close to Lake Matheson, famous for its reflected views of the Southern Alps including Aoraki/Mount Cook and Mount Tasman.

1. Fox Glacier Guiding is the local go-to for getting on the ice and enjoying guided heli-hikes.
2. A short journey west of Fox Glacier is Gillespies Beach, an historic gold mining settlement. Here you can take a walk to the seal colony on Galway Beach.
3. The Minnehaha Track is an enjoyable short walk during the day and even more special at night when the glowworms come out.
4. Make Fox Glacier your starting point for the Copland Track, a two day tramp that takes you to the famous Welcome Flat hot pools, or the newly opened day hike to Lake Gault.
5. A helicopter ride to Fox Glacier showcasing the aerial views of rugged peaks, frozen rivers and glacial valleys below is a must do.

Room Inclusions & Key Information:

Tea/coffee & toast making facilities, multi-channel TV, telephone, free and unlimited WiFi, clock radio, fridge, iron and ironing board, hairdryer, desk space.

Check-in time: 2.00pm **Check-out time:** 10.00am

Office hours: 8.00am – 8.00pm

On-site secure parking: Free of charge

Available on request: Cot, high chair, guest BBQ

Breakfast Service: Continental breakfast available on request.

ACCOMMODATION BY TYPE >	COMPACT QUEEN	SUPERIOR STUDIO	1 B/RM UNIT
Microwave		•	•
Tea, coffee, toaster & fridge	•	•	•
Sink, microwave & fridge		•	•
Sink, microwave, fridge & cook top		•*	•
Separate bedroom			•

* Please book a Superior King for a cook top.

Total Rooms: 24



Situated in a quiet, central location within walking distance to local restaurants, cafes, activity providers, Fox Glacier guiding and helicopter companies. Bella Vista Fox Glacier provides modern, affordable, superior quality accommodation to suit all budgets and travellers. It is the perfect base while you explore Fox Glacier, Lake Matheson and Westland Tai Poutini National Park. Look no further for your accommodation option in Fox Glacier. Stay with us, you won't be disappointed.



ASHBURTON

SH 1 Corner West St & Saunders Rd, Ashburton
 Phone: 03 307 7505
 Email: ashburton@bellavista.co.nz

Distance from Motel:
 Christchurch Airport & Mt Hutt Ski Fields 60mins
 Shops & restaurants 5mins Trotts Garden 5 km
 Aviation Museum 4km
 Lake Hood 10km



THE PERFECT STOPOVER POINT!



Room Inclusions & Key Information:

SKY TV, free and unlimited WiFi, fridge, iron and ironing board, hairdryer, high pressure showers, multiple plugs for charging.

Check-in time: 2.00pm. **Check-out time:** 10.00am

Office hours: 7.30am – 9.00pm

On-site secure parking: Free of charge

Available on request: Interconnecting rooms, cot, high chair & conference room for up to 10 delegates boardroom style.

Breakfast Service: Continental breakfast available

ACCOMMODATION BY TYPE >	COMPACT QUEEN	SUPERIOR STUDIO	1 B/RM UNIT
Microwave		•	•
Tea, coffee, toaster & fridge	•	•	•
Sink, microwave & fridge		•	•
Sink, microwave, fridge & hotplate			•
Separate bedroom			•

Total Rooms: 18



Bella Vista Ashburton is a contemporary motel offering a superior standard of comfort. We pride ourselves on presenting meticulously clean, chemical free, well-appointed rooms with double glazing - ensuring superior warmth and quietness. Break your journey with Bella Vista Ashburton, located 50 minutes from Christchurch Airport and Mt Hutt Ski field - in the heart of Canterbury's rich agricultural region.



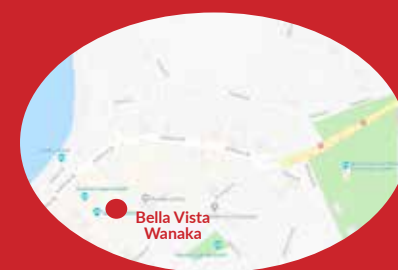
LOCAL ATTRACTIONS

Ashburton is a destination which delivers so much more than you'd expect. Set in the heart of Canterbury's rich agriculture region, Ashburton is the hub of Mid-Canterbury and the perfect base for onward adventures. Get out and explore the surrounding countryside which holds some wonderful attractions and activities.

1. Get in touch with some amazing white water rafting with Ragitata Rafts.
2. Ashburton Aviation Museum boasts a large collection of military and commercial aircraft.
3. Lake Hood is the locals aquatic playground. Enjoy the water or picnic on the shore.
4. Enjoy a sunrise like no other across the Canterbury Plains aboard one of Ballooning Canterbury's graceful balloons.
5. Head out into the heart of the Canterbury countryside and visit Lord of the Rings film locations, Erehwon Station Horse Stud or take time out at the quaint Staverly Store.
6. For winter action, use Bella Vista Ashburton as a cost effective accommodation option for snow adventures at Mt. Hutt.



Distance from Motel:
 Airport 10km Town Centre 20m
 Queenstown 68km
 Arrowtown 56km Ski fields 21km



LOCATION

LOCATION

LOCATION!



STANDARD STUDIO

LOCAL

ATTRACTIONS

A premium lakeside resort, Wanaka is the place to stay to get amongst summer and winter activities. Nothing is too far away from the doorstep of your room including incredible views.

1. Enjoy one of the many local walks for panoramic views including Mount Iron or Mount Roy.
2. SkyDive Lake Wanaka. One of the most popular locations to jump out of a plane.
3. Winter in Wanaka is divine. Ski Cardrona or Treble Cone.
4. Check out Puzzling World for an intriguing and unique interaction.
5. Take to the lake, including jet-boating or something more sedate.

Room Inclusions & Key Information:

Tea/coffee & toast making facilities, multi channel TV, telephone, free and unlimited WiFi, clock radio, fridge, iron and ironing board, hairdryer, desk space.
 Air conditioning/heat pumps in every room.

Check-in time: 2.00pm. **Check-out time:** 10.00am

Office hours: 8.00am – 9.00pm

On-site secure parking: Free of charge

Available on request: Interconnecting rooms, cot & high chair.

Breakfast Service: Continental breakfast available on request.

ACCOMMODATION BY TYPE >	COMPACT QUEEN	SUPERIOR STUDIO	1 B/RM UNIT
Microwave		•	•
Tea, coffee, toaster & fridge	•	•	•
Sink, microwave & fridge		•	•
Sink, microwave, fridge & hotplate			•
Separate bedroom			•

Total Rooms: 18



Location, location, location - Bella Vista Motel Wanaka is surrounded by restaurants, cafés, wine bars and shops. Walk everywhere and enjoy the magnificent scenery, food and wine.

Enjoy the views of the snow-capped mountains of Mt. Aspiring National Park. Ski Treble Cone, Cardrona or Snow Park in winter. Tramp, swim, fish or enjoy many of the activities that are available throughout summer and the rest of the year.



OAMARU

208 Thames Street, Oamaru
Phone: 03 434 2400
Email: oamaru@bellavista.co.nz



OAMARU'S HISTORIC PRECINCT

GREAT LOCATION CLOSE TO ATTRACTIONS



ONE BEDROOM UNIT

Room Inclusions & Key Information:

Free and unlimited WiFi, Tea/coffee & toast making facilities, SKY TV, Microwave oven, clock radio, fridge, iron and ironing board, hairdryer, desk space, Coffee Machines, BBQ/Picnic Area.

Check-in time: 2.00pm. **Check-out time:** 10.00am

Office hours: 7.30am – 10pm

On-site secure parking: Free of charge

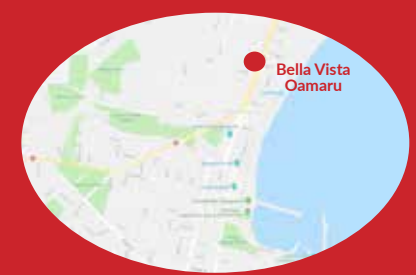
Available on request: Interconnecting rooms, cot & high chair.

Breakfast Service: Continental Breakfast Available on Request

ACCOMMODATION BY TYPE >	COMPACT QUEEN	SUPERIOR STUDIO	1 B/RM UNIT
Microwave	•	•	•
Tea, coffee, toaster & fridge	•	•	•
Sink, microwave & fridge		•	•
Sink, microwave, fridge & hotplate		•	•
Separate bedroom			•

Total Rooms: 18

Distance from Motel:
Shops & restaurants 2mins
Blue Penguin Colony 2.4km
Moeraki Boulders 30mins
Dunedin 113km



LOCAL ATTRACTIONS

Immerse yourself in the character of this seaside Victorian town still resplendent in all its wonderful glory. The unique Whitestone architecture and wildlife interaction make this a must do in your itinerary.

1. Check out Steampunk HQ, the unique interpretation of a world featuring steam-powered technology.
2. Visit the Blue Penguin Colony and watch the penguins come ashore at dusk from the purpose built grandstand.
3. Head to the Moeraki Boulders, just half an hour south of town and see if you can make sense of these giant boulders.
4. Wander around the famous and lovingly restored Oamaru stone building architecture in the historic precinct.
5. Take a journey through the Waitaki valley and enjoy local produce, lake views and wineries.



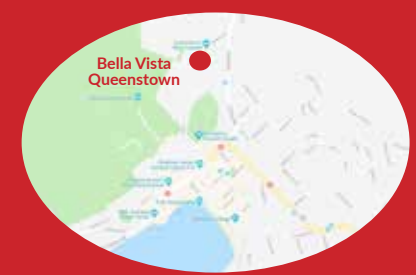
Oamaru is world renowned for its architecture which has been lovingly restored. A thriving community of artists and craftspeople also add variety and character to this 'historic precinct'.

The Oamaru Blue Penguin Colony is fast becoming a popular tourist attraction, with blue and yellow-eyed penguins coming ashore nightly. Along with the easy drive to Mt Cook or Moeraki Boulders this makes Bella Vista Motel Oamaru a must stop.



QUEENSTOWN

36 Robins Road, Queenstown
Phone: 03 442-4468
Email: queenstown@bellavista.co.nz



Distance from Motel:
Town Centre 300m Airport 7km
Ski fields 15km Arrowtown 20km
Skyline Gondola 300m AJ Hackett Bungy 32km
Milford Sound 394km Lake Wanaka 68km

QUIET CENTRAL LOCATION



LOCAL ATTRACTIONS

Queenstown needs very little introduction. An absolute mecca of visitor attractions and of course, every reason to visit. From amazing vistas, all-action attractions, snow sports par excellence, this year round resort never disappoints.

1. The must-do activity is to take a trip on the 100 year old TSS Earnslaw steamship across the lake to Walter Peak.
2. The wineries that make the famous Central Otago Pinot Noir are close at hand so take a wine tour to check them out.
3. For views, a luge, zip-rides, downhill biking, a star-gazing experience and world class cuisine, a trip up the Skyline Gondola should be on your must-do list.
4. If you fancy something fast and fun which also an all-weather adventure, try Hydro Attack.
5. For winter lovers, The Remarkables and Coronet Peak snow fields offer world class ski runs and both are close to town.
6. Set aside a day to visit Milford Sound a destination some claim to be a wonder of the world.

Room Inclusions & Key Information:

Tea, coffee & toast making facilities, Freeview TV, telephone, free and unlimited WiFi, clock radio, fridge, ironing board and hairdryer.

Check-in time: 2.00pm. **Check-out time:** 10.00am

Office hours: 8.00am – 6pm

On-site secure parking: Free of charge

Available on request: Interconnecting rooms, Cot, High Chair.

Breakfast Service: Continental breakfast available on request.

ACCOMMODATION BY TYPE >	COMPACT QUEEN	SUPERIOR STUDIO	1 B/RM UNIT
Microwave	•	•	•
Tea, coffee, toaster & fridge	•	•	•
Sink, microwave & fridge		•	•
Sink, microwave, fridge & hotplate			•
Separate bedroom			•

Total Rooms: 24



Bella Vista Motel Queenstown is the perfect base for your stay.

If you are looking for affordable & comfortable accommodation situated in a quiet location only a short 3 minute walk to the Queenstown city centre, Lake Wakatipu and Gondola, then look no further than Bella Vista! This modern complex has a majestic backdrop, set amidst stunning alpine scenery with restaurants, cafes and shops all within walking distance. Our warm friendly and informative service will make your stay both enjoyable and memorable.



TE ANAU

9 Mokoroa Street, Te Anau
Phone: 03 249 8683
Email: teanau@bellavista.co.nz



Distance from Motel:
Town Centre 250m
Doubtful Sound 21km
Milford Sound 117km
Queenstown 171km

A STONE'S THROW FROM LAKE TE ANAU



LOCAL ATTRACTIONS

This quiet lake-side town is a tranquil and perfect antidote to the fast pace of modern life. Take time out in Te Anau and enjoy lakeside living in the gateway to the marvellous Fiordland National Park.

1. Three of NZ's Great Walks are located in Fiordland. Walk for a day, or do the full track and stay in huts along the way.
2. Take a chance to explore the magical Te Anau glow-worm caves on a 2 ½ guided tour by boat
3. Te Anau is the perfect departure point for a wonderful day trip into the Fiordland National Park and a cruise on the incomparable Milford Sound.
4. Fiordland's fish are always biting. Te Anau is a great place to enjoy guided fishing freshwater or saltwater.
5. If you still need some speed, try jet-boating on the upper Waiau River with Fiordland Jet.

Room Inclusions & Key Information:

Tea/coffee & toast making facilities, SKY TV, telephone, free and unlimited WiFi, clock radio, fridge, iron and ironing board, hairdryer, desk space.

Check-in time: 2.00pm. **Check-out time:** 10.00am

Office hours: 8.00am – 8.00pm

On-site secure parking: Free of charge

Available on request: Interconnecting rooms, cot, high chair.

Breakfast Service: Continental breakfast available on request.

ACCOMMODATION BY TYPE >	COMPACT QUEEN	SUPERIOR STUDIO	1 B/RM UNIT
Microwave	•	•	•
Tea, coffee, toaster & fridge	•	•	•
Sink, microwave & fridge		•	•
Sink, microwave, fridge & hotplate			•
Separate bedroom			•

Total Rooms: 18



Te Anau

Just a stone's throw from Lake Te Anau on a quiet street and 2 minutes walk to the town centre, restaurants, cafes and shopping. Te Anau is the entrance to the world famous Fiordland National Park and within easy reach of Milford and Doubtful Sounds. Escape the hustle & bustle of Queenstown and stay an extra night in Te Anau. Driving the Southern Scenic Route to Invercargill via Tuatapere and Riverton is recommended.



DUNEDIN

704 Great King Street, Dunedin
Phone: 03 477 2232
Email: dunedin@bellavista.co.nz



Distance from Motel:
City Centre and The Octagon 1km
Airport 30km Otago University 800m
Railway Station 1.5km Larnach Castle 20km
Royal Albatross Centre 35km

1KM

TO THE CBD AND OCTAGON



SUPERIOR STUDIO

Room Inclusions & Key Information:

Tea/coffee & toast making facilities, SKY TV, telephone, free and unlimited WiFi, clock radio, fridge, iron and ironing board, hairdryer, desk space.

Check-in time: 2.00pm Check-out time: 10.00am

Office hours: 8.00am – 9.00pm

On-site secure parking: Free of charge

Available on request: Interconnecting rooms, cot, high chair.

Breakfast Service: Continental breakfast available

ACCOMMODATION BY TYPE >	COMPACT QUEEN	SUPERIOR STUDIO	1 B/RM UNIT
Microwave	•	•	•
Tea, coffee, toaster & fridge	•	•	•
Sink, microwave & fridge		•	•
Sink, microwave, fridge & hotplate		•	•
Separate bedroom			•

Total Rooms: 16

LOCAL

ATTRACTIONS

This fabulous city of the south has something for every visitor. Set around the Otago Harbour it is known for its Scottish history, impressive architecture, wildlife and students.

1. Enjoy New Zealand's only castle and discover the historic Larnach Castle and Gardens.
2. Dunedin Railway Station is the must-take picture in Dunedin.
3. The Otago Peninsula offers a wonderful blend of wildlife experiences both on land and at sea including the Royal Albatross Centre.
4. Dunedin has a vibrant street art scene so take a tour of downtown walls featuring large murals.
5. And there are so many other attractions including the Botanic Gardens, the Chinese Garden, Olveston Historic Home, the Speights Brewery, Baldwin St. and more.



Bella Vista welcomes you to the southern city of Dunedin on the eastern coast of New Zealand's scenic South Island. This modern motel-style accommodation comprises 16 superior suites featuring studios and 1 bedroom motel units with a comprehensive range of facilities. The self-contained, non-smoking suites are available in an assortment of configurations to suit families, corporate stays and travellers alike.



MOSGIEL (DUNEDIN AIRPORT)

85 Gordon Road, Mosgiel
Phone: 03 484 7258
Email: mosgiel@bellavista.co.nz

Distance from Motel:
Dunedin Domestic & International Airport 16.5km
Shops & restaurants 5mins Invercargill 193km
Dunedin City Centre 15km



**10 MINS
TO DUNEDIN
AIRPORT**

LOCAL ATTRACTIONS

The small town of Mosgiel is a perfect spot to easily access Dunedin, head into the rural Otago countryside, or use as a convenient overnight spot to the close-by Dunedin airport.

1. Dunedin is only a 10 minutes' drive away so be sure to take advantage of everything the city offers during your stay.
2. Mosgiel has four golf courses that cater for all abilities. Whether you want to have a competitive game or enjoy a leisurely hit.
3. Just a 10 minute drive from Mosgiel, Outram is a quaint little town with bric-brac shops, café and the interesting Taieri Historical Museum.
4. There are plenty of great walking and biking tracks for all levels of ability in and around Mosgiel. Be sure to take a trip to the Taieri Plains Lookout.
5. Take some time out and enjoy a stroll through Mosgiel's Memorial Park and Playground.



TUNNEL BEACH



COMPACT STUDIO

Room Inclusions & Key Information:

Tea/coffee & toast making facilities, SKY TV, telephone, free and unlimited WiFi, clock radio, fridge, iron and ironing board, hairdryer, desk space.

Check-in time: 2.00pm. **Check-out time:** 10.00am

Office hours: 7.30am - 8.00pm weekdays, 8.00am - 8.00pm weekends

On-site secure parking: Free of charge

Available on request: Interconnecting rooms, cot, high chair.

Breakfast Service: Continental breakfast available on request.

ACCOMMODATION BY TYPE >	COMPACT QUEEN	SUPERIOR STUDIO	1 B/RM UNIT
Microwave	•	•	•
Tea, coffee, toaster & fridge	•	•	•
Sink, microwave & fridge		•	•
Sink, microwave, fridge & hotplate			•
Separate bedroom			•

Total Rooms: 18



This 18 unit property is located conveniently 15kms south of Dunedin and a 10 minute drive to Dunedin Airport. Mosgiel is a thriving rural supply centre and this motel provides convenient access to local bars, restaurants and shops all within easy walking distance. Just a 10 minute drive and you can be in central Dunedin, but still enjoy all the trappings of unique small town New Zealand.



INVERCARGILL

240 Tay Street, Invercargill
Phone: 03 217 9799
Email: invercargill@bellavista.co.nz



Distance from Motel:
Invercargill Domestic Airport 5mins
Town Centre 3mins Queenstown 188km
Te Anau 157km Catlins 129km

GREAT LOCATION TO THE CBD



COMPACT STUDIO

LOCAL ATTRACTIONS

Invercargill is the gateway to Southland, whether it is Fiordland, the Catlins, Stewart Island or beyond. Come and stay to get to know this region better and enjoy the tremendous and warm southern hospitality.

1. Visit E Hayes & Sons, where the Burt Munro story is told and his record breaking motorcycle is on display. Burt Munro was once the fastest man on two wheels.
2. Invercargill is the gateway to Stewart Island by ferry or flight. With over 80% of the island given over to the Rakiura National Park, the island offers some very special experiences.
3. Tour the Southern Scenic Route through the sparsely populated and rugged Catlins which features terrific coastal landscapes and dense native rainforest.
4. Bill Richardson's Transport World is a world class display of vintage motors, lovingly restored trucks and plenty more. It's a must visit when in town as is the associated Motorcycle Mecca.
5. Head south to Bluff, famous for its oysters, the signpost at the end of Highway 1 and its port. Take a walk to the top of Bluff Hill and lookout over Foveaux Strait.

Room Inclusions & Key Information:

Tea/coffee & toast making facilities, SKY TV, telephone, free and unlimited WiFi, clock radio, fridge, iron and ironing board, hairdryer, desk space.

Check-in time: 2.00pm **Check-out time:** 10.00am

Office hours: 8.00am – 9.00pm

On-site secure parking: Free of charge

Available on request: Interconnecting rooms, cot, high chair.

Breakfast Service: Continental breakfast available on request.

ACCOMMODATION BY TYPE >	COMPACT QUEEN	SUPERIOR STUDIO	1 B/RM UNIT
Microwave	•	•	•
Tea, coffee, toaster & fridge	•	•	•
Sink, microwave & fridge		•	•
Sink, microwave, fridge & hotplate			•
Separate bedroom			•

Total Rooms: 18



This immaculately presented 18-room motel is conveniently located on the main route leading into Invercargill from the north, just 2 minutes from the city centre. This wealthy southern town offers a huge variety of bars, cafes and restaurants. Invercargill makes a great half way stop point between Milford Sound and Dunedin when navigating the Southern Scenic Route. Base yourself in Invercargill for an extra night and explore Stewart Island and the Catlins Coast area.



How to Book www.bellavista.co.nz | 0800 235 528

BELLA VISTA™
ACCOMMODATION
NATIONWIDE

NEW ZEALAND

Book Direct & SAVE with Bella Vista Rewards



Join for news, deals and earn
\$5 per night
when you Book Direct
Sign Up at www.bellavista.co.nz

Bella Vista Rewards Benefits

- Earn a \$5 credit per Night per Booking
- Stay again within 30 days of earning your first points and receive a bonus \$10 voucher
- Stay 6 times within 12 months and receive a bonus \$20 voucher
- Use credits and vouchers to offset the cost of future stays
- Enjoy exclusive upgrades, deals and bonuses
- Access Member Only local discounts
- Save 6c per litre at all Challenge Fuel Station

To collect your Rewards points, ensure you sign-in to the Bella Vista Rewards tablet in reception every stay.

TERMS

& CONDITIONS

The Terms and Conditions shown here are to be used as a guide only as they can vary depending on the package and the Bella Vista motel you have booked. Please refer to your motel Booking Confirmation for the specific terms and conditions of your booking.

PAYMENT POLICY

No payment is required at the time of booking (unless specific booking conditions apply such as Non-Refundable rates), but we do require credit card details to secure your booking. Please pay directly to the property on your arrival. Your credit card will not be processed until you arrive or if the cancellation policy applies.

CANCELLATION POLICY

If your plans change for some reasons, we do understand, and ask that you let us know as soon as possible. Failure to advise us may incur a charge. For our Flexi-Rates we generally require 48 hours notice of cancellations or a penalty charge of a minimum of one night's accommodation may be made if your room cannot be re-let. No showing up at all without notice will incur a charge of one night's accommodation. Changes to your reservation within 48 hours may incur a charge. Please ensure you read the Cancellation Policy carefully on your booking notification.

CHILD POLICY

Children under the age of 2 years stay free if extra bedding is not required. Any child requiring extra bedding will be charged at the extra person rate. Baby cots/cribs and high chairs are usually available on request. An extra charge may apply.

BEDDING REQUESTS

Bedding configurations are on a request basis only and subject to availability. Whilst we will do our best to meet your requirements, we cannot guarantee your requested bed type.

SMOKING POLICY

Smoking is NOT permitted in all units. If smoke is detected inside a unit there will be a charge to restore the unit to its non-smoking status.

BELLA VISTA MOTELS